



# How to Repair a JetEdge High-Pressure Seal Using Kit #11451


These instructions will demonstrate how to replace components of a JetEdge High-Pressure Seal with kit #11451

Written By: Adam Dumas



# INTRODUCTION

Hypertherm is in no way affiliated with the above mentioned manufacturer

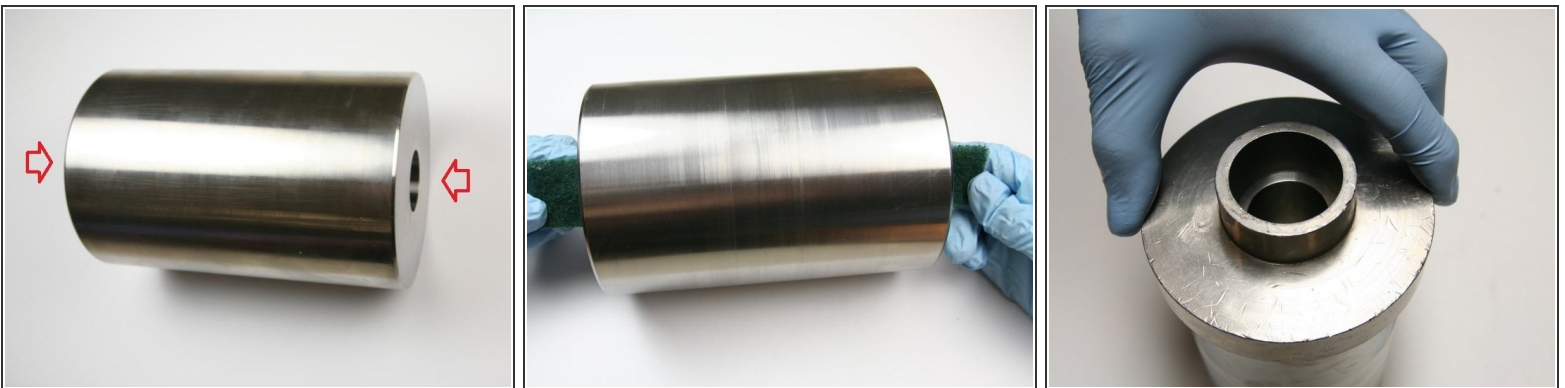
<div> <b>TOOLS:</b></div> <div><ul style="list-style-type: none"><li>• <a href="#">JetEdge Seal Removal and Installation Tool</a> (1)</li><li>• <a href="#">Rubber Mallet</a> (1)</li></ul></div>	<div><div></div> <b>PARTS:</b></div> <div><ul style="list-style-type: none"><li>• <a href="#">High-Pressure Seal Kit #11451</a> (1)</li><li>• <a href="#">High-Pressure Seal with O-ring #11024 (included in kit)</a> (1)</li><li>• <a href="#">Hoop (4) #11018 (included in kit)</a> (1)</li><li>• <a href="#">High-Vacuum Grease #11447 (included in kit)</a> (1)</li><li>• <a href="#">High-pressure Cylinder #11047</a> (1)</li><li>• <a href="#">Isopropyl Alcohol</a> (1)</li></ul></div>
--	--

## Step 1 — How to Repair a JetEdge High-Pressure Seal Using Kit #11451



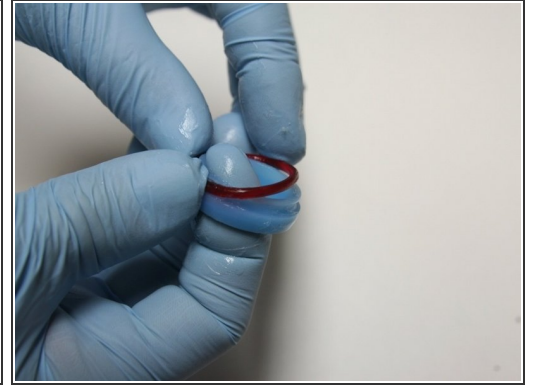
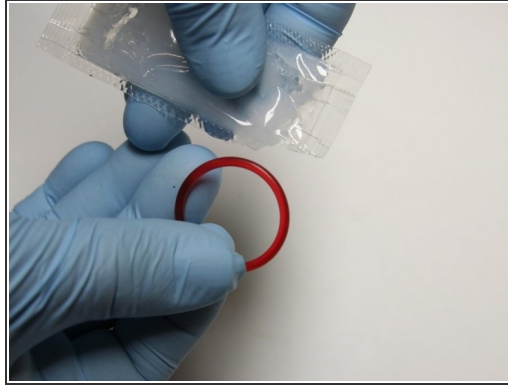
- Use the small stepped end of the installation tool to push the internal back-up sleeve through the cylinder forcing the seal and hoop out of the other end of the [high-pressure cylinder](#).
- Turn over the high-pressure cylinder and repeat this process.
- Thoroughly clean the high-pressure cylinder with isopropyl alcohol or a similar cleaning agent.

## Step 2



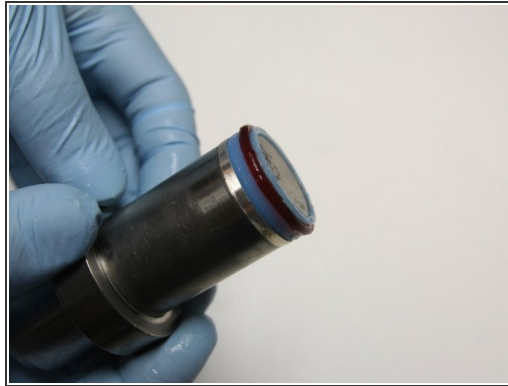
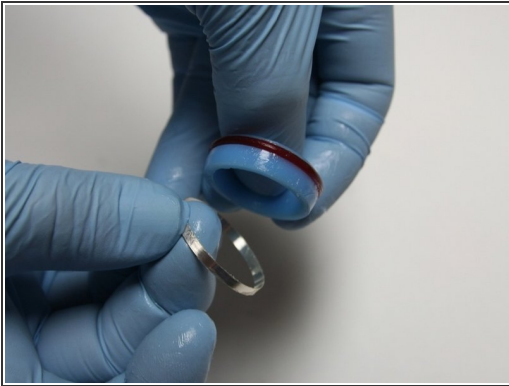
- Visually inspect the bore of the high-pressure cylinder and check for cracks/blemishes.
- Roll Scotch Brite on both ends of the high-pressure cylinder to smooth out blemishes.
- Put the sleeve guide tool onto one end of the high-pressure cylinder.
  - ❗ The sleeve guide should spin on the high-pressure cylinder when installed correctly.

### Step 3



- Put the installation sleeve into the sleeve guide with the larger ID, tapered end, up.
- Apply [high vacuum grease](#) to the O-ring.
- Put the O-ring on the [seal](#).

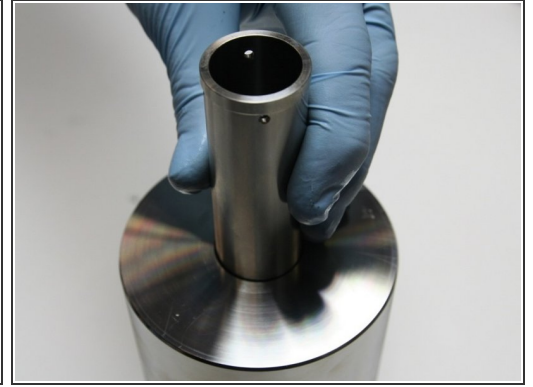
### Step 4



- Put the [hoop](#) onto the seal with the sharp (tapered) end towards the seal.
- Put the seal and hoop onto the bigger stepped side of the installation tool.
- Put the installation tool, with the hoop and seal, into the sleeve.

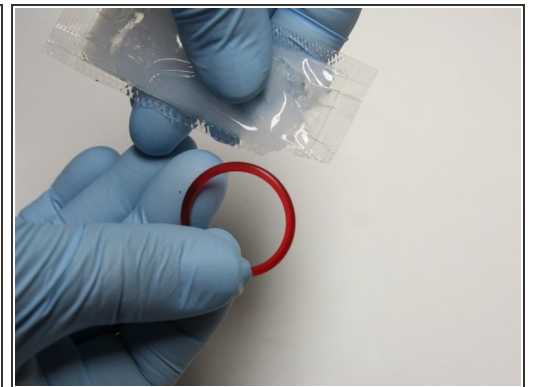


## Step 5



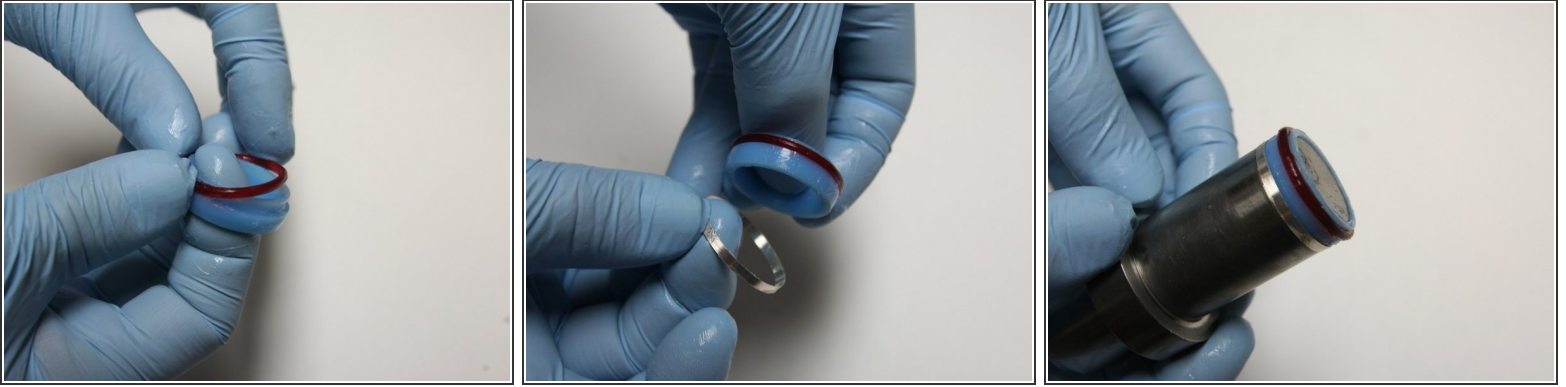
- Secure the hoop in place by tapping the installation tool with a rubber mallet until the tool bottoms out on the guide.
- Apply high vacuum grease to both ends of the [spacer tube](#).
- Remove the tools from the finished end of the high-pressure cylinder, turn the high-pressure cylinder over, and insert the spacer tube into the bore.

## Step 6



- Put the sleeve guide tool onto the end of the high-pressure cylinder.
  - ❗ The sleeve guide should spin on the high-pressure cylinder when installed correctly.
- Put the installation sleeve into the sleeve guide with the larger ID, with the tapered end, up.
- Apply high vacuum grease to the O-ring.

## Step 7



- Put the O-ring onto the seal.
- Put the hoop onto the seal with the sharp (tapered) end towards the seal.
- Put the seal and hoop onto the bigger stepped side of the installation tool.

## Step 8



- Put the installation tool with the hoop and seal into the sleeve.
- Secure the hoop in place by tapping the installation tool with a rubber mallet until the tool bottoms out on the guide.
- Proceed to the installation of the high-pressure cylinder on the intensifier.

