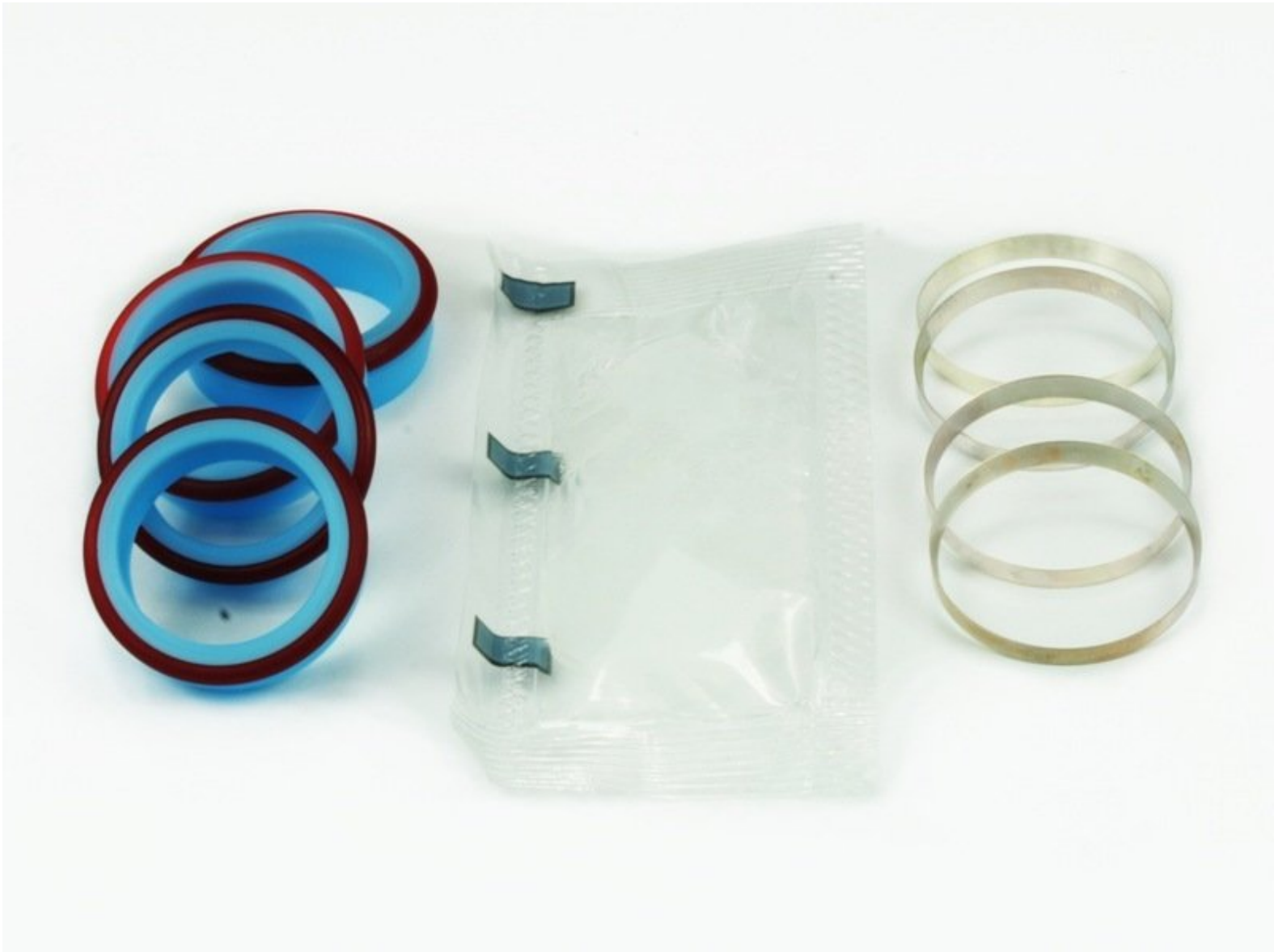




How to Repair a JetEdge High-Pressure Seal Using Kit #11449

These instructions will demonstrate how to replace components of a JetEdge High-Pressure Seal
with kit #11449

Written By: Adam Dumas



INTRODUCTION

Hypertherm is in no way affiliated with the above mentioned manufacturer

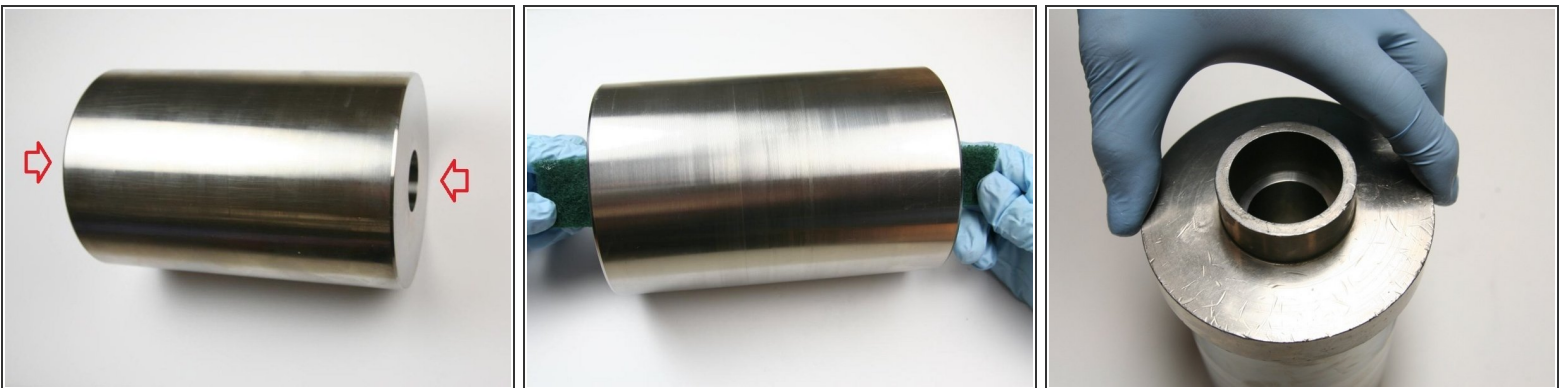
<div> TOOLS:</div> <ul style="list-style-type: none">• Rubber Mallet (1)• JetEdge Seal Removal and Installation Tool (1)	<div><div></div> PARTS:</div> <ul style="list-style-type: none">• High-Pressure Seal Kit #11449 (1)• High-Pressure Seal with O-ring #11076 (included in kit) (1)• High-Pressure Hoops (4) #11077 (included in kit) (1)• High-Vacuum Grease #11447 (included in kit) (1)• High-Pressure Cylinder #11123 (1)• Isopropyl Alcohol (1)
---	--

Step 1 — How to Repair a JetEdge High-Pressure Seal Using Kit #11449



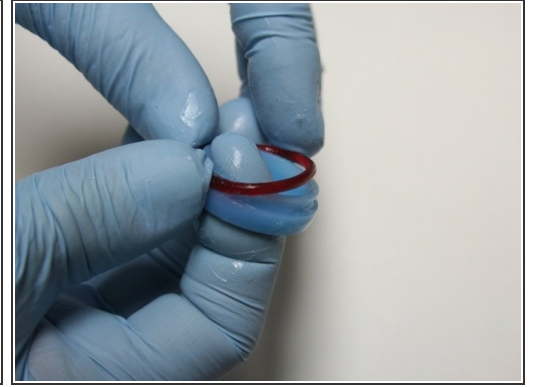
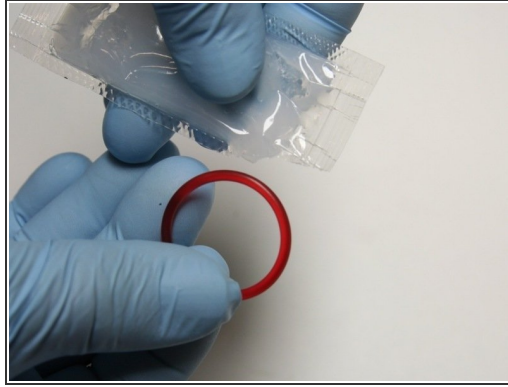
- Use the small stepped end of the installation tool to push the internal back-up sleeve through the cylinder forcing the seal and hoop out of the other end of the [high-pressure cylinder](#).
- Turn over the high-pressure cylinder and repeat this process.
- Thoroughly clean the high-pressure cylinder with isopropyl alcohol or a similar cleaning agent.

Step 2



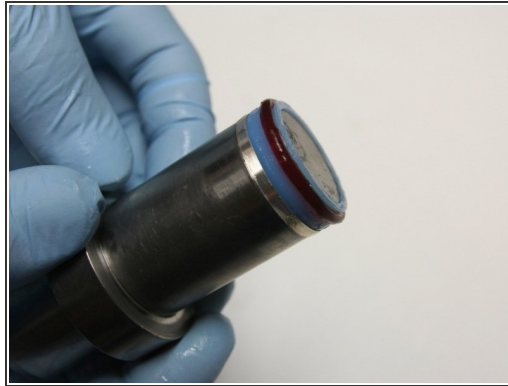
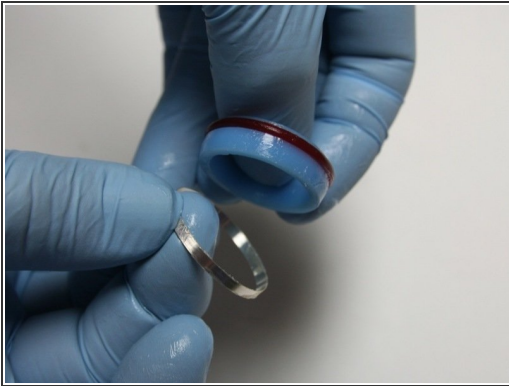
- Visually inspect the bore of the high-pressure cylinder and check for cracks/blemishes.
- Use Scotch Brite on both ends of the high-pressure cylinder to smooth out blemishes.
- Put the seal guide tool onto the one end of the high-pressure cylinder.
 - ❗ The seal guide should spin on the high-pressure cylinder when installed correctly.

Step 3



- Put the installation sleeve into the sleeve guide with the larger ID, with the tapered end, up.
- Apply [high vacuum grease](#) to the O-ring.
- Put the O-ring on the [seal](#).

Step 4



- Put the [hoop](#) with the sharp (tapered) end down onto the back of the seal.
- Put the seal and the hoop onto the bigger stepped side of the installation tool.
- Put the installation tool with the hoop and seal into the sleeve.

Step 5



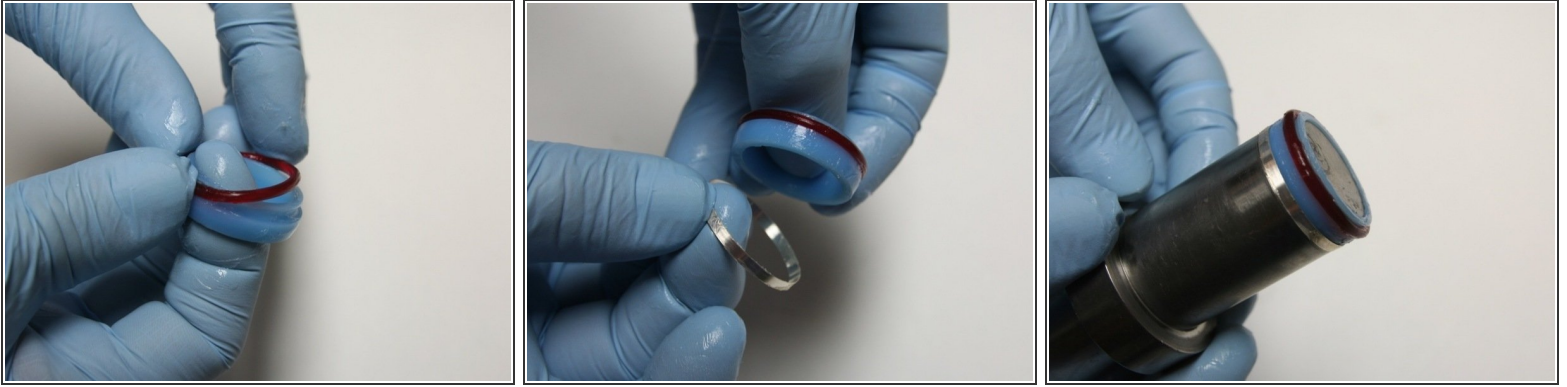
- Secure the hoop in place by tapping the installation tool with a rubber mallet until the tool bottoms out on the guide.
- Apply high vacuum grease to both ends of the [spacer tube](#).
- Remove the tools from the finished end of the high-pressure cylinder, turn the high-pressure cylinder over, and insert the spacer tube into the bore.

Step 6



- Put the seal guide tool onto the end of the high-pressure cylinder and the seal guide should spin on the high-pressure cylinder when installed correctly.
- Put the installation sleeve into the sleeve guide with the larger ID, with the tapered end, up.
- Apply high vacuum grease to the O-ring.

Step 7



- Put the O-ring onto the high-pressure seal.
- Put the hoop with the sharp (tapered) end down onto the back of the seal.
- Put the seal and hoop onto the bigger stepped side of the installation tool.

Step 8



- Put the installation tool with the hoop and seal into the sleeve.
- Secure the hoop in place by tapping the installation tool with a rubber mallet until the tool bottoms out on the guide.
- Proceed to the installation of the cylinder on the intensifier.