



How to Repair a JetEdge Style On/Off Valve (Old Style) Using Kit #11369

These instructions will demonstrate how to replace components of a JetEdge Style On/Off Valve (Old Style) with kit #11369

Written By: Adam Dumas



INTRODUCTION

Hypertherm is in no way affiliated with the above mentioned manufacturer.



TOOLS:

- [13/16" wrench](#) (1)
- [7/8" wrench](#) (1)
- [1" wrench](#) (1)



PARTS:

- [Valve Repair Kit #11369](#) (1)
- [Needle #11041 \(Included in Kit\)](#) (1)
- [Needle Bearing #11042 \(Included in Kit\)](#) (1)
- [High-Pressure Valve Seal #11043 \(included in kit\)](#) (1)
- [Seat #11289 \(Included in Kit\)](#) (1)
- [Actuator #12828](#) (1)
- [Adapter #13841](#) (1)
- [Valve Body #11055](#) (1)
- [Blue Goop #11111](#) (1)

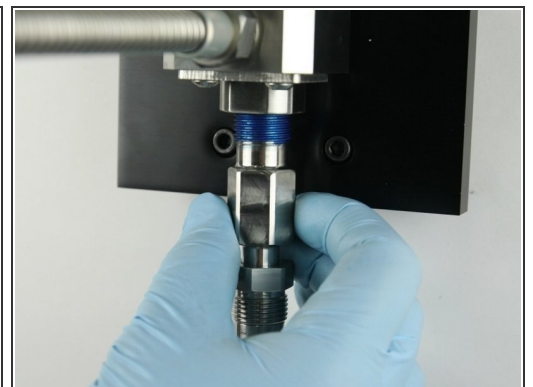
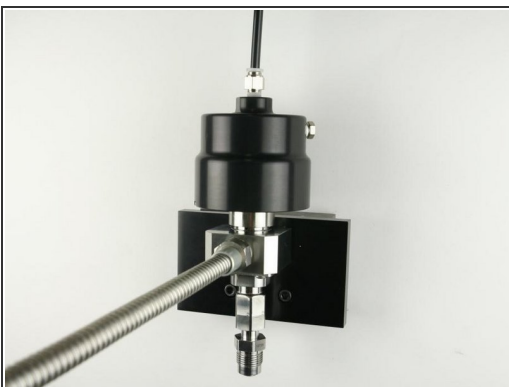
Step 1 — How to Repair a JetEdge Style On/Off Valve (Old Style) Using Kit #11369



⚠ Always make sure all high-pressure water has been removed from the valve by following the machine manufacturers' safety instructions. Failure to do so can cause severe injury or death.

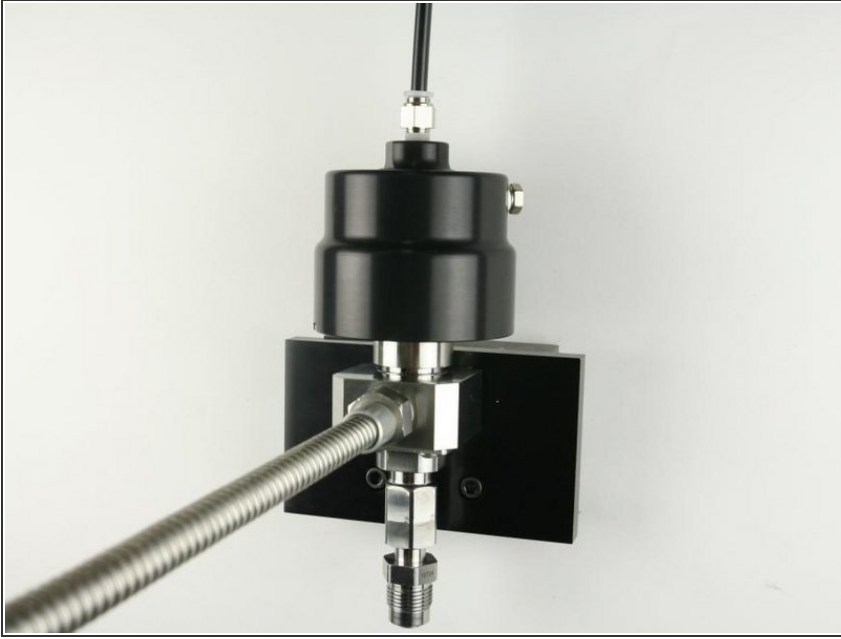
- Turn OFF all water pressure to the on/off valve.
- Turn the on/off valve ON to raise the [needle](#) from the [seat](#).

Step 2



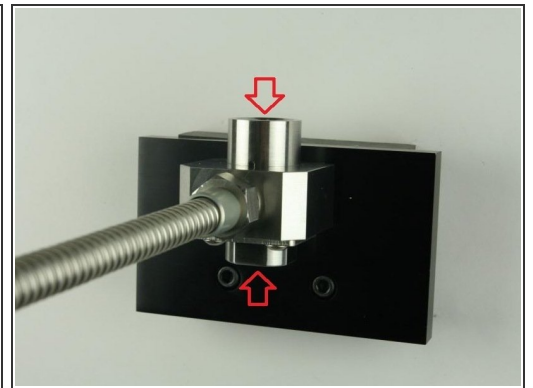
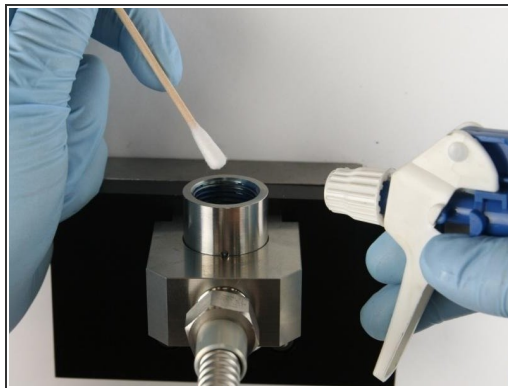
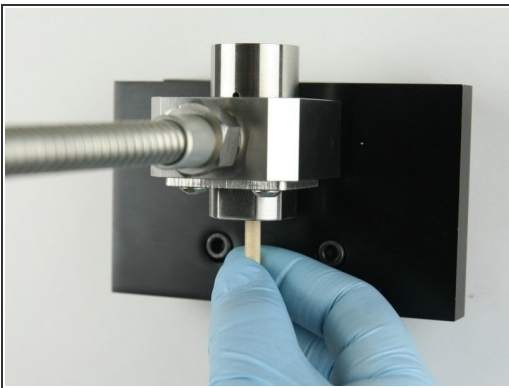
- Components can be replaced with the [valve body](#) in the mounting collar.
- Loosen the [adapter](#) from the valve body using a 1" and 13/16" wrench.
- Unthread the adapter from the valve body.

Step 3



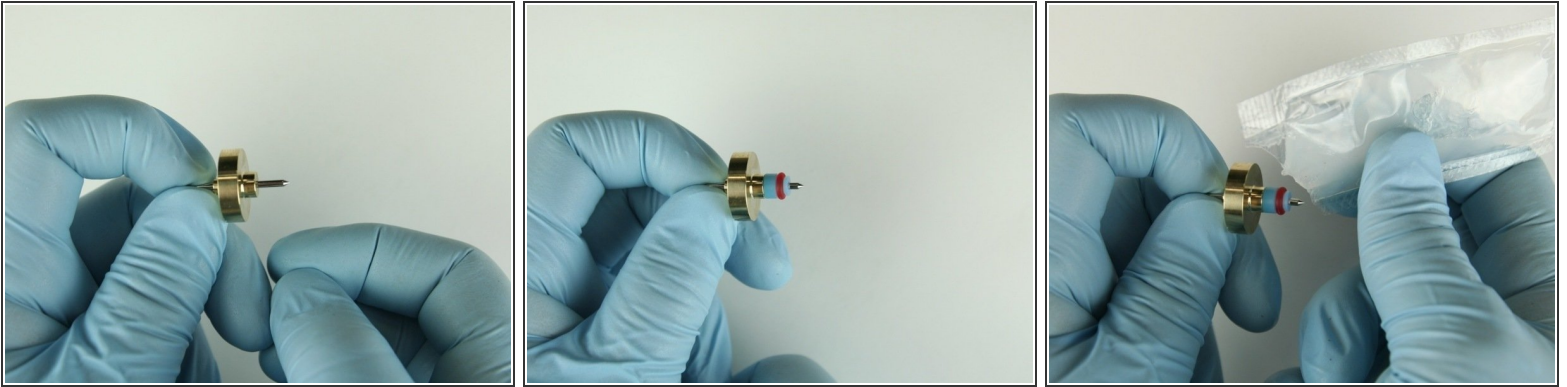
- For similar disassembly see [Step 3 kit #11328](#) (parts/tools may vary)

Step 4



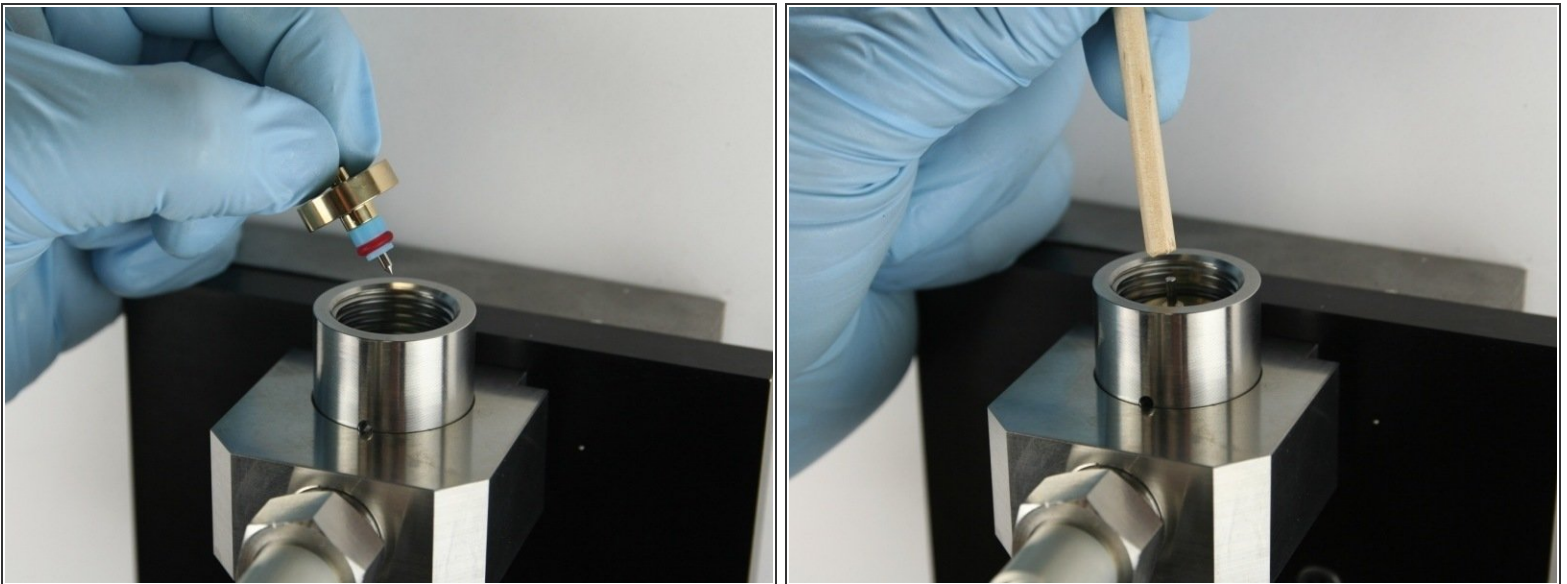
- Remove all the valve components using the included dowel.
- Thoroughly clean the interior/exterior of the valve body with isopropyl alcohol before replacing the components.
- ☑ Inspect the top and bottom of the bore for cracks/blemishes. If excessive wear or cracks are visible, replace the [valve body](#).

Step 5



- Slide the [needle bearing](#) with the smaller stepped side onto the needle point first.
- Slide the [high-pressure valve seal](#) onto the needle point.
- Apply [high vacuum grease](#) to the outside diameter of the high pressure valve seal.

Step 6



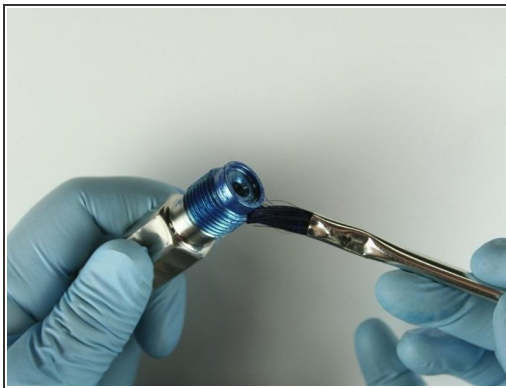
- Put the needle point at the top of the valve body.
- Use the dowel to push the needle into the valve body until the needle bearing bottoms out.

Step 7



- For similar assembly see [Step 7 Kit #13683](#) (parts/tools may vary)

Step 8



- Clean the adapter of all Blue Goop with isopropyl alcohol.
- Reapply Blue Goop to the threads and to the top of the adapter.
- Put seat into the adapter with flat the side towards the adapter.

Step 9



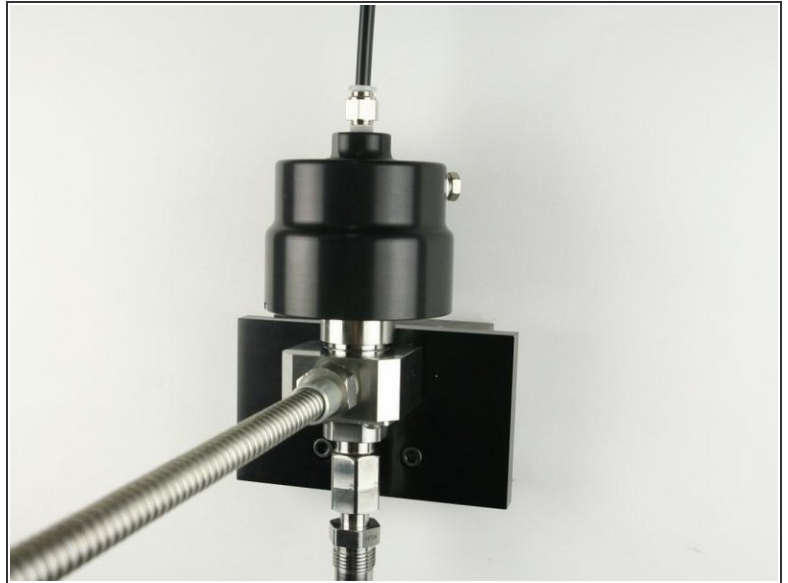
- Apply Blue Goop to the top of the seat.
- Turn the air to the actuator ON.
- Thread the adapter into the valve body.

Step 10



- Tighten adapter into valve body using a 1" and 13/16" wrench.
- Turn the air to the actuator OFF.
- Apply water pressure to the valve assembly to verify there are no leaks.

Step 11



- Quickly cycle the valve on and off a few times to purge the system of all contaminants before installing the cutting head.
- Reinstall the cutting head and continue the cutting process.