



How to Repair a Flow Style On/Off Valve (Insta 1) Using Kit #11146

These instructions will demonstrate how to replace components of a Flow Style On/Off Valve (Insta 1) with kit #11146.

Written By: Adam Dumas



INTRODUCTION

Hypertherm is in no way affiliated with the above mentioned manufacturer.



TOOLS:

- [1" wrench](#) (1)
- [13/16" wrench](#) (1)
- [7/8" wrench](#) (1)



PARTS:

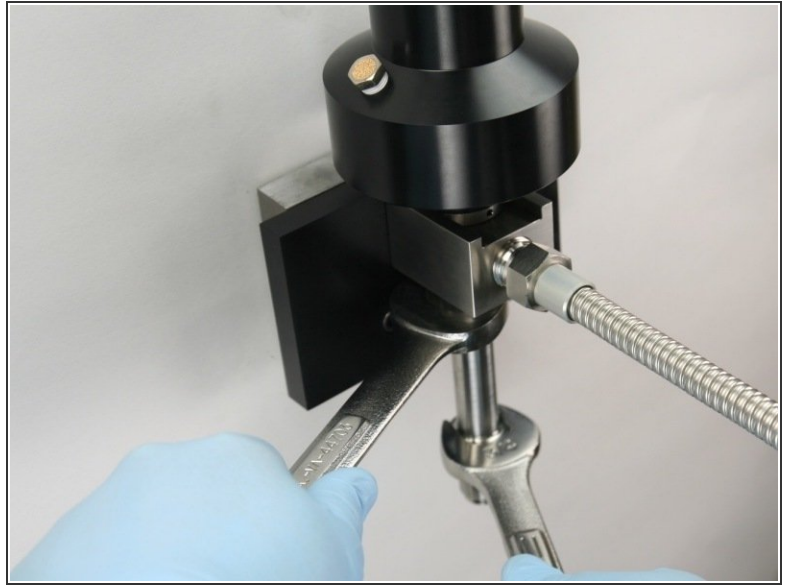
- [On/Off Valve Repair Kit #11146](#) (1)
- [O-ring #11145 \(included in kit\)](#) (1)
- [Poppet Stem #11140 \(Included in Kit\)](#) (1)
- [Poppet Seat #11141 \(included in kit\)](#) (1)
- [High-Pressure Valve Seal #11142 \(Included in Kit\)](#) (1)
- [Back-up Ring #11143 \(included in kit\)](#) (1)
- [Actuator #12128](#) (1)
- [Valve Screw #11218](#) (1)
- [Nozzle Tube #11358-4](#) (1)
- [Valve Body #11144](#) (1)
- [Blue Goop #11111](#) (1)
- [Isopropyl Alcohol](#) (1)


Step 1 — How to Repair a Flow Style On/Off Valve (Insta 1) Using Kit #11146

⚠ Always make sure all high-pressure water has been removed from valve by following machine manufacturers' safety instructions. Failure to do so can cause severe injury or death.

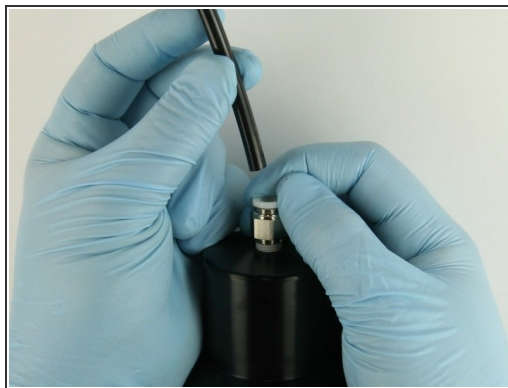
- Turn OFF all water pressure to the on/off valve.
- Turn the on/off valve ON to raise [poppet stem](#) from the [poppet seat](#).

Step 2



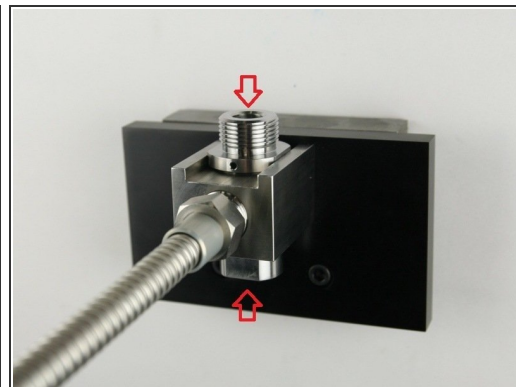
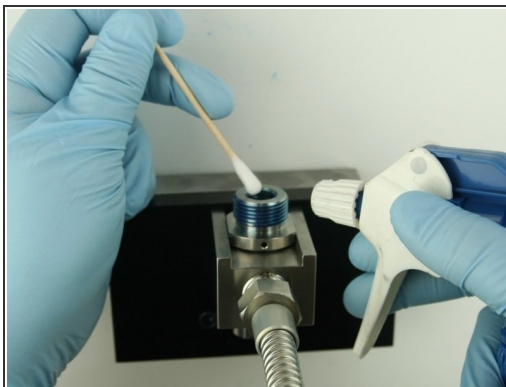
-  The [valve kit](#) components can be replaced with the [valve body](#) in the mounting collar.
- Unthread the [nozzle tube](#) from the valve body using 3/4" and 7/8" wrench.

Step 3



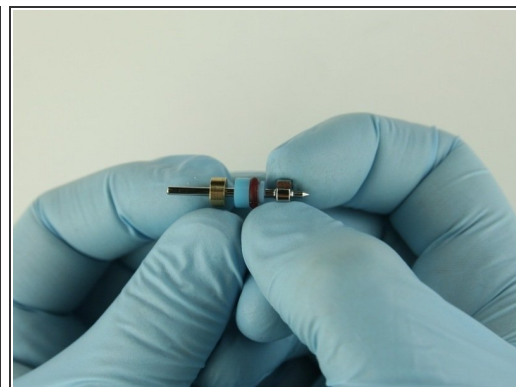
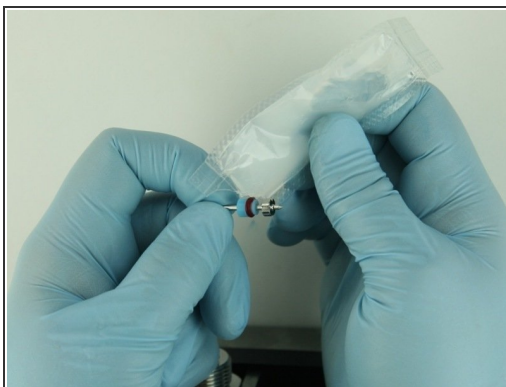
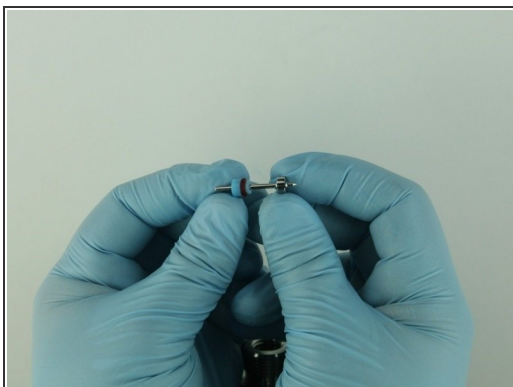
- Turn the air to the [cctuator](#) OFF at the controls.
- Disconnect the air line from the actuator.
- Unthread the actuator from the valve body using 1-1/8" wrench.

Step 4



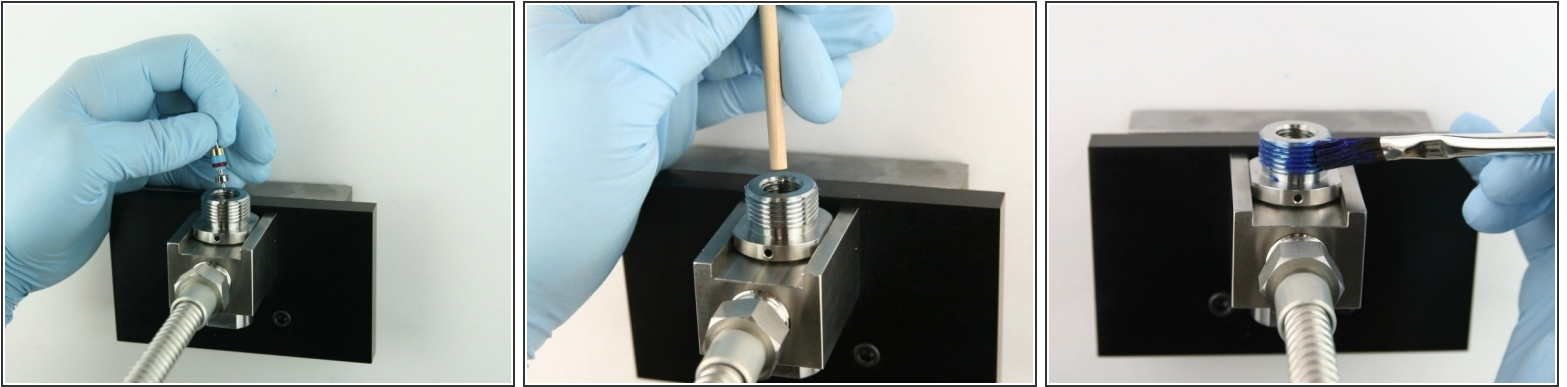
- Remove the old valve components from the valve body with the included dowel.
- Thoroughly clean the interior/exterior of the valve body with isopropyl alcohol or a similar cleaning agent before replacing the components.
- ❗ Visually inspect the top and bottom of the bore for cracks/blemishes. If excessive wear or cracks are visible, replace the [valve body](#).

Step 5



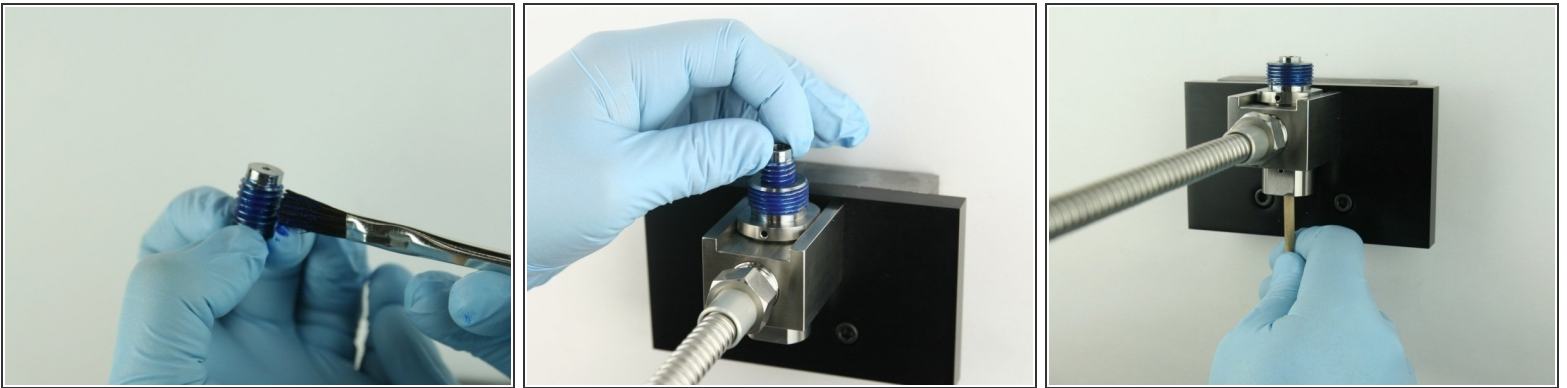
- With the O-ring towards the point of the poppet stem, slide the [high-pressure valve seal](#) on to the poppet stem.
- Apply a high-pressure lubricant or similar ([11136](#)) to the outside diameter of the high-pressure valve seal.
- Slide the [back-up ring](#) on to the poppet stem behind the high-pressure valve seal.

Step 6



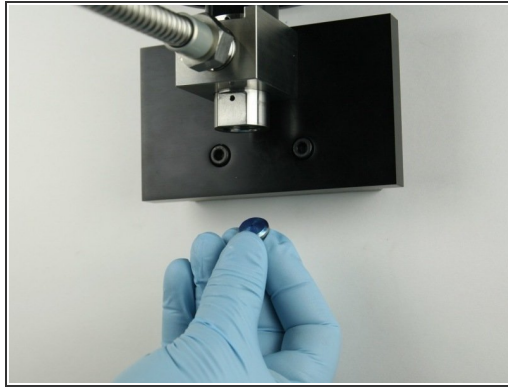
- Put the poppet stem, with the point down, at the top of the valve body.
- Use the dowel to push the poppet stem down until the back-up ring is flush with the top of the bore.
- Apply [Blue Goop](#) to the top threads of the valve body.

Step 7



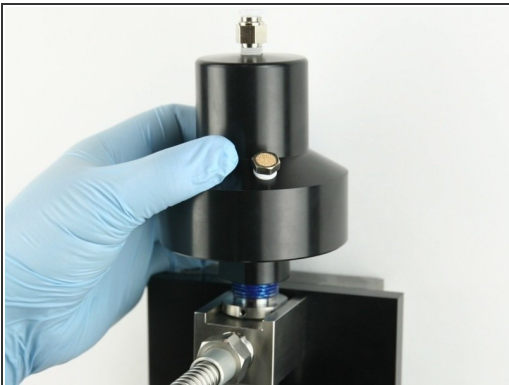
- Apply Blue Goop to the [valve screw](#) threads.
- Thread the valve screw into the valve body until it bottoms out.
- With the dowel, push the poppet stem point flush with the bottom of the bore.

Step 8



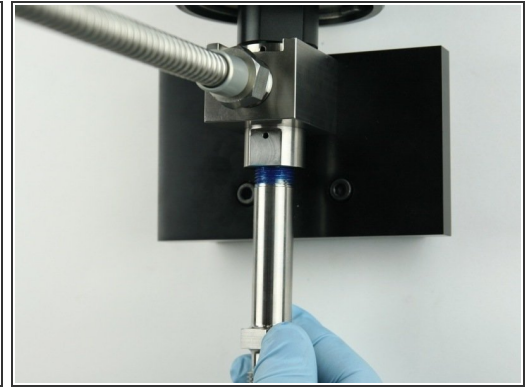
- Apply Blue Goop to all surfaces of the poppet seat.
- Put the poppet seat at bottom of the valve body.
- Put the [O-ring](#) behind the poppet seat so it is held in place.

Step 9



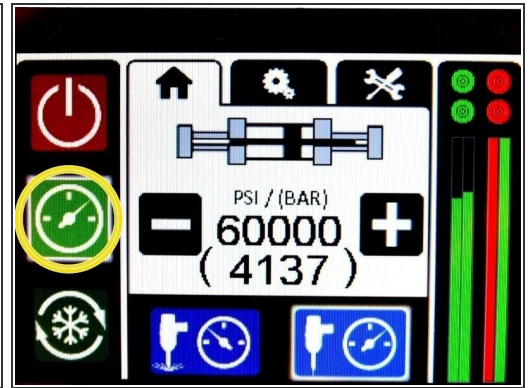
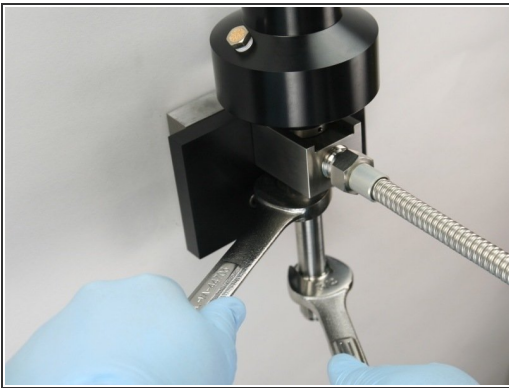
- Thread (hand tighten) the actuator on top of the valve body.
- Reconnect the air line to the top of the actuator.
- Turn the air to the actuator ON to relieve the pressure from the poppet.

Step 10



- Thoroughly clean the nozzle tube of all Blue Goop.
- Reapply Blue Goop to the threads of the nozzle tube.
- Thread the nozzle tube into the bottom of the valve body.

Step 11



- Tighten the nozzle tube to the valve body using 3/4" and 7/8" wrench.
- Turn the air to the actuator OFF to set the poppet stem into the poppet seat.
- Apply water pressure to the valve assembly to verify that there are no leaks.

Step 12



- Quickly cycle the valve on and off a few times to purge the system of all contaminants before installing the cutting head.
- Re-install the cutting head and continue the cutting process.