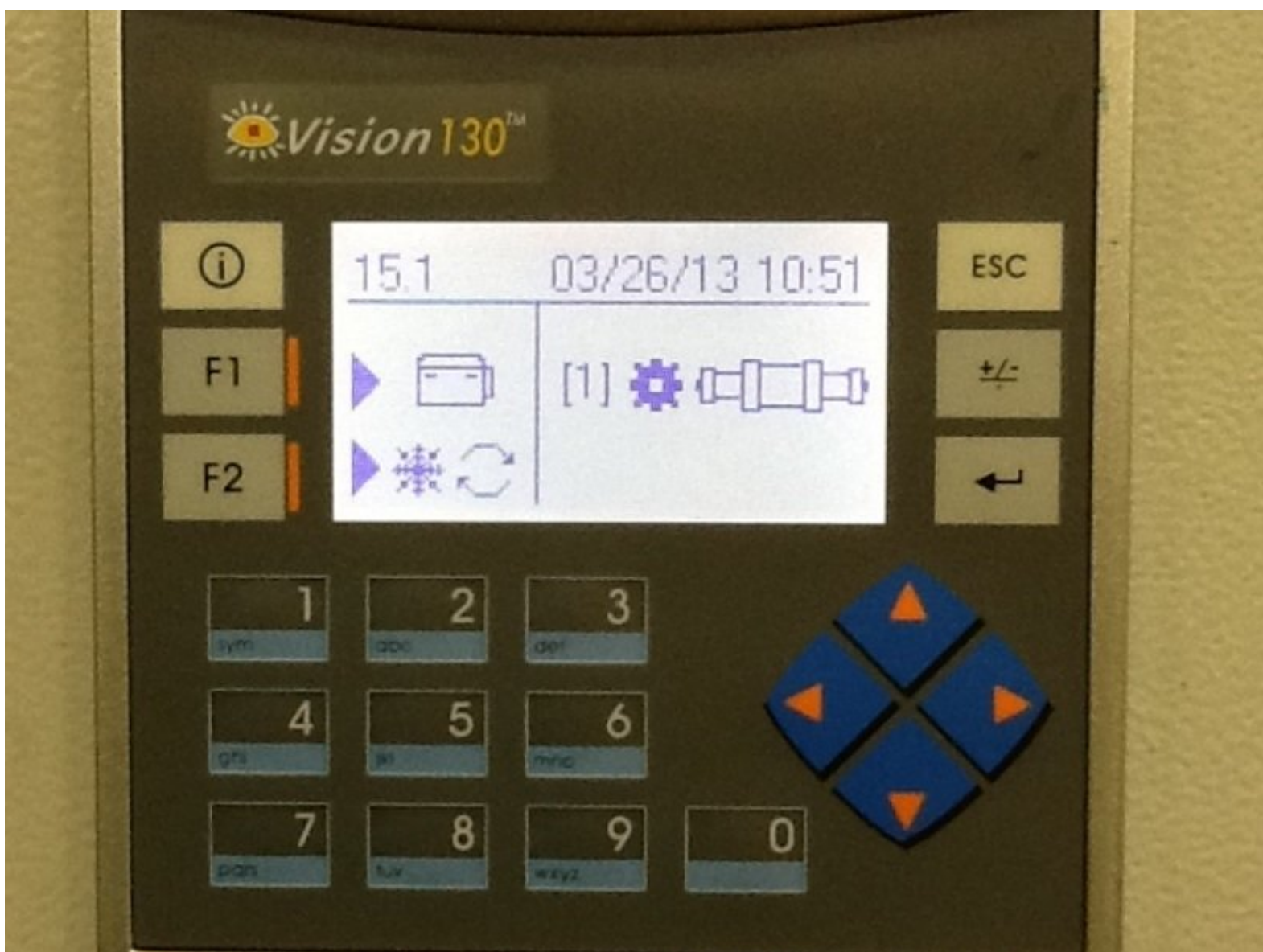




Installing a New Program - HyPrecision 15 / 30 / 50 and AccuStream Matrix PLC (Unitronics)

These instructions show you how to properly install a new program on to your HyPrecision 15 / 30 / 50 or AccuStream Matrix Unitronix PLC.

Written By: Arion Vandergon

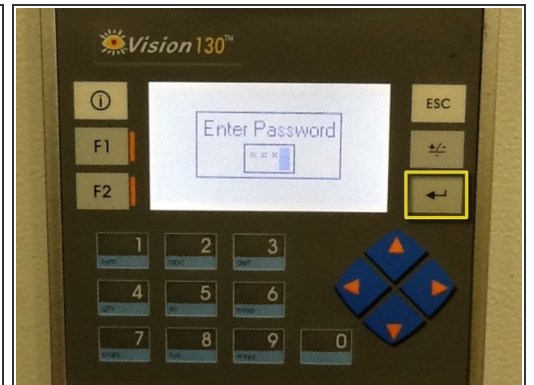


Step 1 — Installing a New Program - HyPrecision 15 / 30 / 50 and AccuStream Matrix PLC (Unitronics)



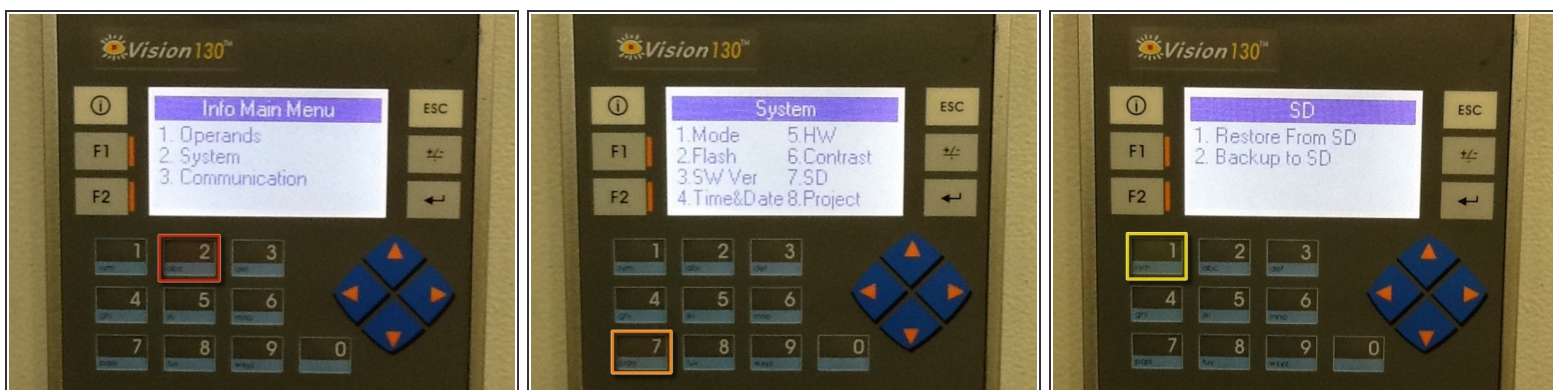
- Locate PLC inside electrical cabinet.
- If necessary, remove microSD card from left side of PLC.

Step 2



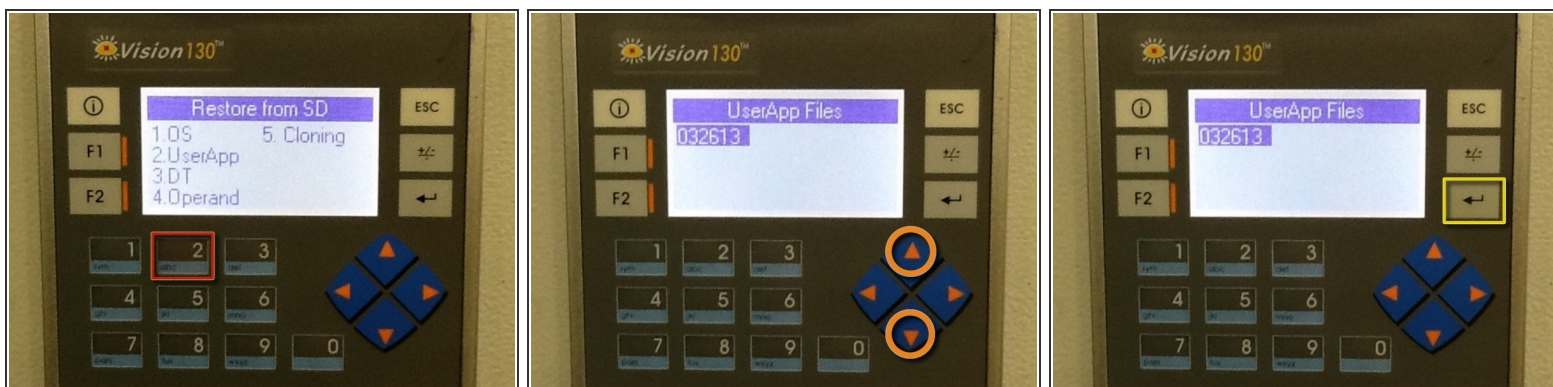
- Insert microSD card with new program into PLC.
- Press and hold info button until password screen appears.
- Enter password and press enter. Default password is 1111.

Step 3



- Press 2 (System).
- Press 7 (SD).
- Press 1 (Restore from SD).

Step 4



- Press 2 (UserApp).
- Scroll up or down if necessary to highlight program to be loaded.
- Press enter when program is highlighted.

Step 5



- Press enter again to load UserApp file.
- Wait while program is loaded on PLC.
- When PLC reverts to main menu, continue normal operation of pump.